

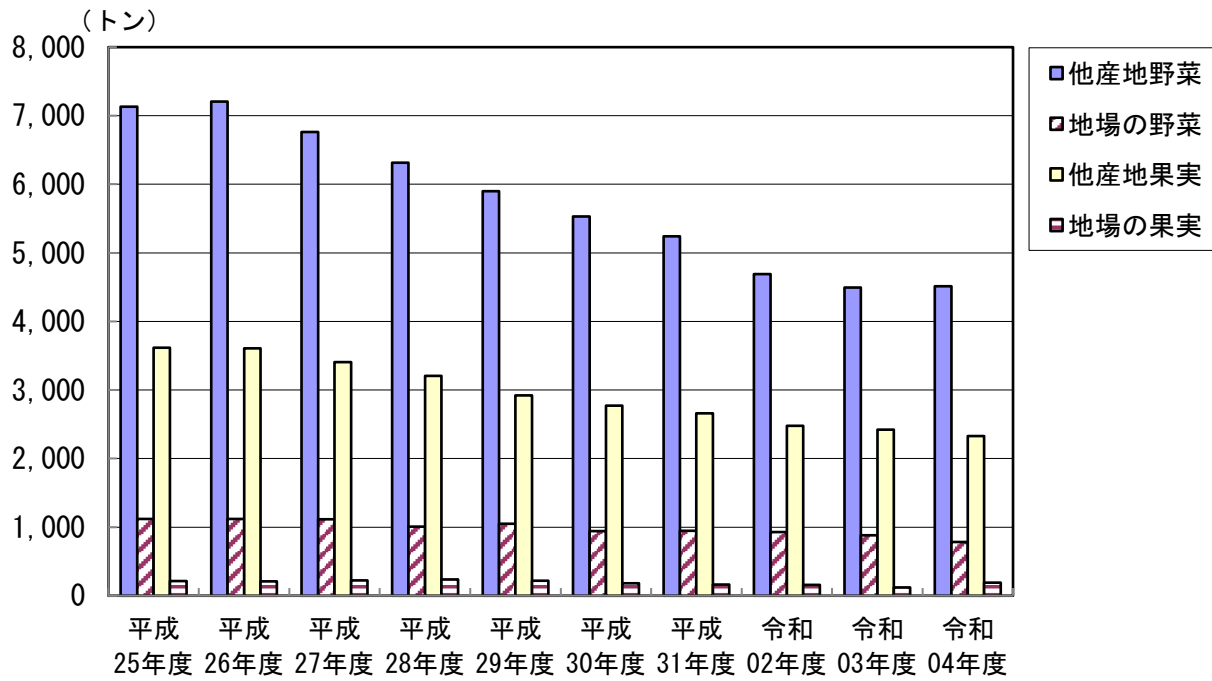
資料

過去10年間の部類別取扱高

単位 上段:数量=kg 下段:金額=円

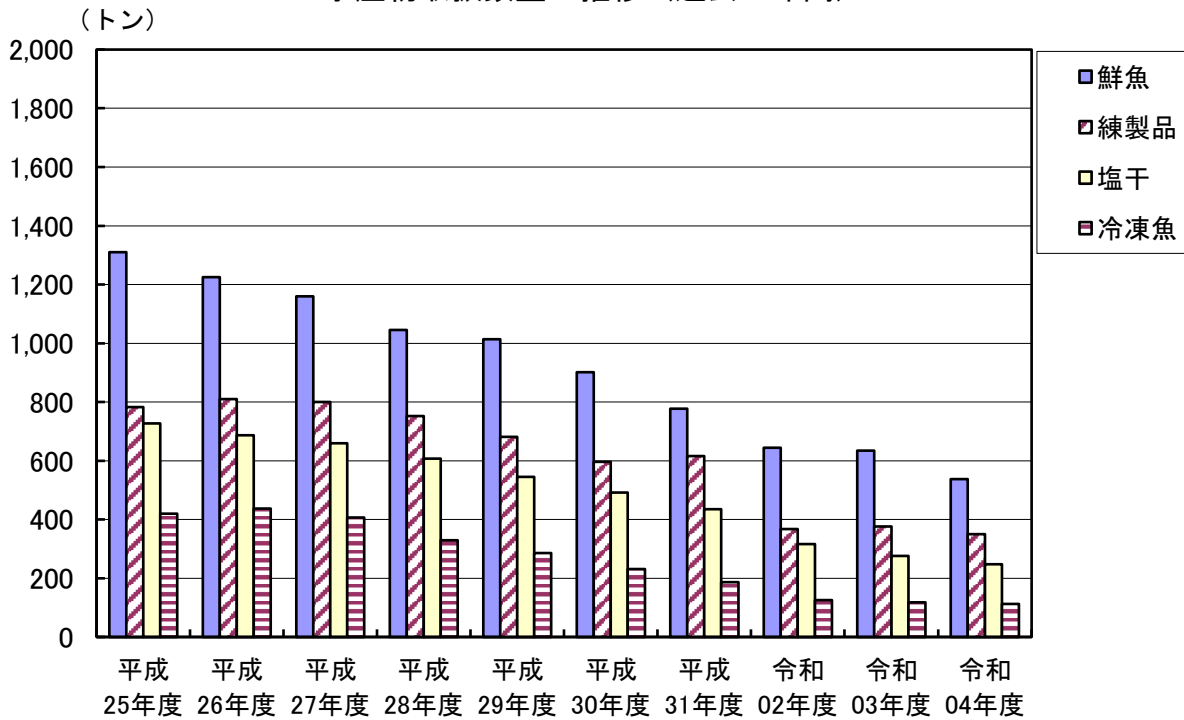
	総取扱高	青果部		野菜		果実		水産部	鮮魚	練製品	塩干	冷凍魚
		地場物(内数)		地場物(内数)		地場物(内数)						
平成25年度	15,321,319	12,080,766	1,330,478	8,252,766	1,118,530	3,828,000	211,948	3,240,553	1,310,034	782,773	727,428	420,318
	6,732,330,199	3,656,392,315	449,313,339	2,389,425,234	370,631,202	1,266,967,081	78,682,137	3,075,937,884	1,342,350,467	656,390,177	682,043,895	395,153,345
平成26年度	15,306,559	12,147,151	1,331,928	8,329,371	1,121,454	3,817,780	210,474	3,159,408	1,225,246	810,365	686,832	436,965
	6,621,396,675	3,613,763,660	436,461,188	2,353,240,721	363,977,701	1,260,522,939	72,483,487	3,007,633,015	1,289,505,845	657,905,358	661,945,240	398,276,572
平成27年度	14,538,583	11,510,926	1,338,793	7,880,251	1,116,243	3,630,675	222,550	3,027,657	1,160,423	800,369	660,095	406,770
	6,706,784,791	3,728,490,659	480,851,402	2,444,546,879	398,086,825	1,283,943,780	82,764,577	2,978,294,132	1,278,420,201	653,412,386	664,536,007	381,925,538
平成28年度	13,497,662	10,765,211	1,243,840	7,323,472	1,007,612	3,441,739	236,228	2,732,451	1,044,537	751,763	607,096	329,055
	6,413,659,823	3,649,020,104	479,607,265	2,384,688,850	392,993,252	1,264,331,254	86,614,013	2,764,639,719	1,189,051,048	628,591,560	600,446,147	346,550,964
平成29年度	12,617,640	10,091,574	1,269,170	6,948,913	1,049,527	3,142,661	219,643	2,526,066	1,013,786	681,084	545,259	285,937
	6,062,935,046	3,450,200,831	458,458,912	2,239,103,559	375,654,493	1,211,097,272	82,804,419	2,612,734,215	1,165,907,151	565,451,990	572,534,997	308,840,077
平成30年度	11,647,184	9,426,199	1,123,195	6,471,219	942,308	2,954,980	180,887	2,220,985	902,281	595,880	491,735	231,089
	5,608,213,510	3,195,683,402	443,724,429	2,040,888,088	370,847,301	1,154,795,314	72,877,128	2,412,530,108	1,118,553,622	508,905,992	528,910,344	256,160,150
平成31年度	11,027,700	9,012,740	1,108,122	6,189,349	946,295	2,823,391	161,828	2,014,961	777,227	616,000	435,106	186,628
	5,219,371,490	3,004,594,690	419,915,252	1,879,343,831	349,370,095	1,125,250,859	70,545,157	2,214,776,800	1,041,951,194	481,147,875	481,708,671	209,969,060
令和02年度	9,707,744	8,254,971	1,088,561	5,618,902	929,587	2,636,069	158,974	1,452,773	644,154	367,134	315,518	125,967
	4,465,675,832	2,803,791,877	443,206,848	1,742,775,819	372,259,254	1,061,016,058	70,947,594	1,661,883,955	821,724,727	343,193,933	342,377,261	154,588,034
令和03年度	9,320,688	7,916,771	1,003,698	5,373,542	881,307	2,543,229	122,391	1,403,917	634,477	375,695	276,096	117,649
	4,329,433,566	2,708,862,831	403,035,180	1,660,208,377	340,459,127	1,048,654,454	62,576,053	1,620,570,735	830,277,182	343,495,215	305,838,685	140,959,653
令和04年度	9,067,966	7,819,816	976,167	5,298,385	784,357	2,521,431	191,810	1,248,150	537,066	349,867	248,449	112,768
	4,470,142,687	2,841,927,833	420,404,990	1,744,238,336	338,345,507	1,097,689,497	82,059,483	1,628,214,854	846,453,831	330,658,115	298,628,268	152,474,640

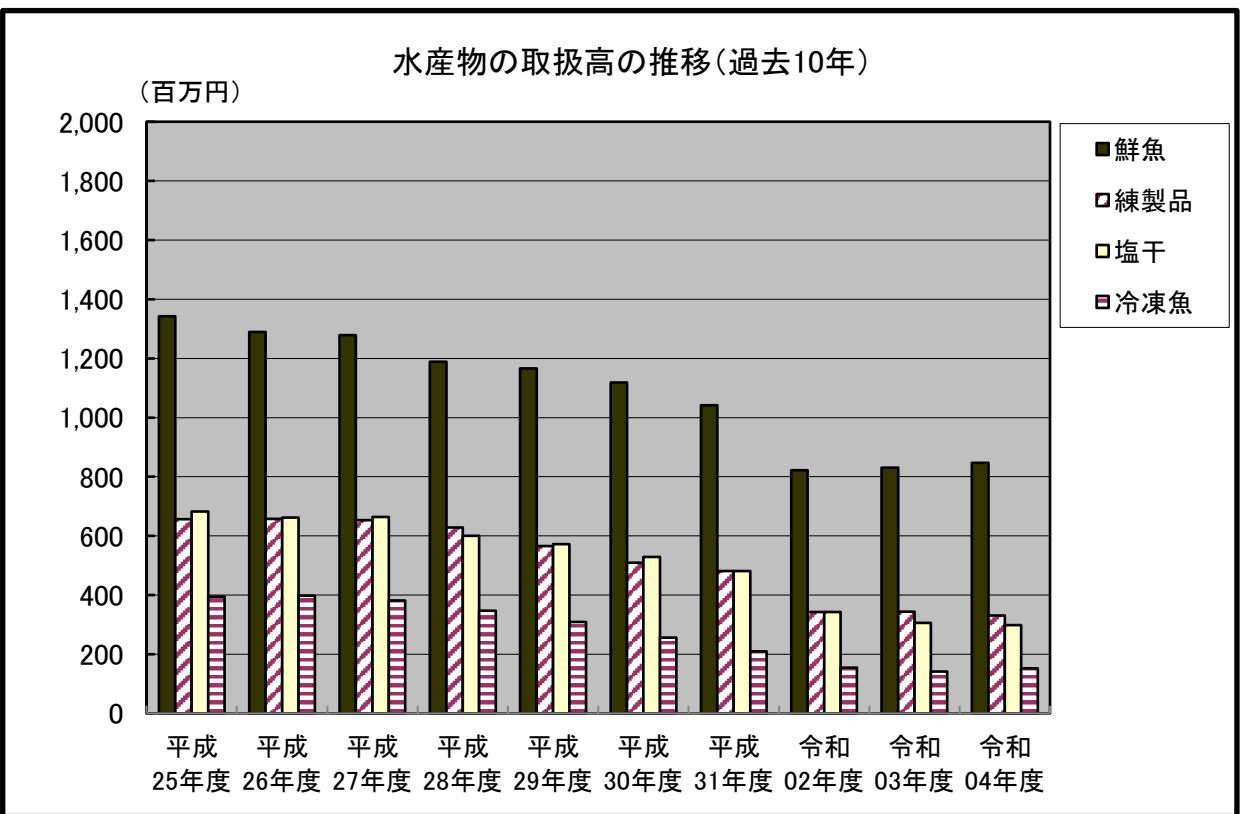
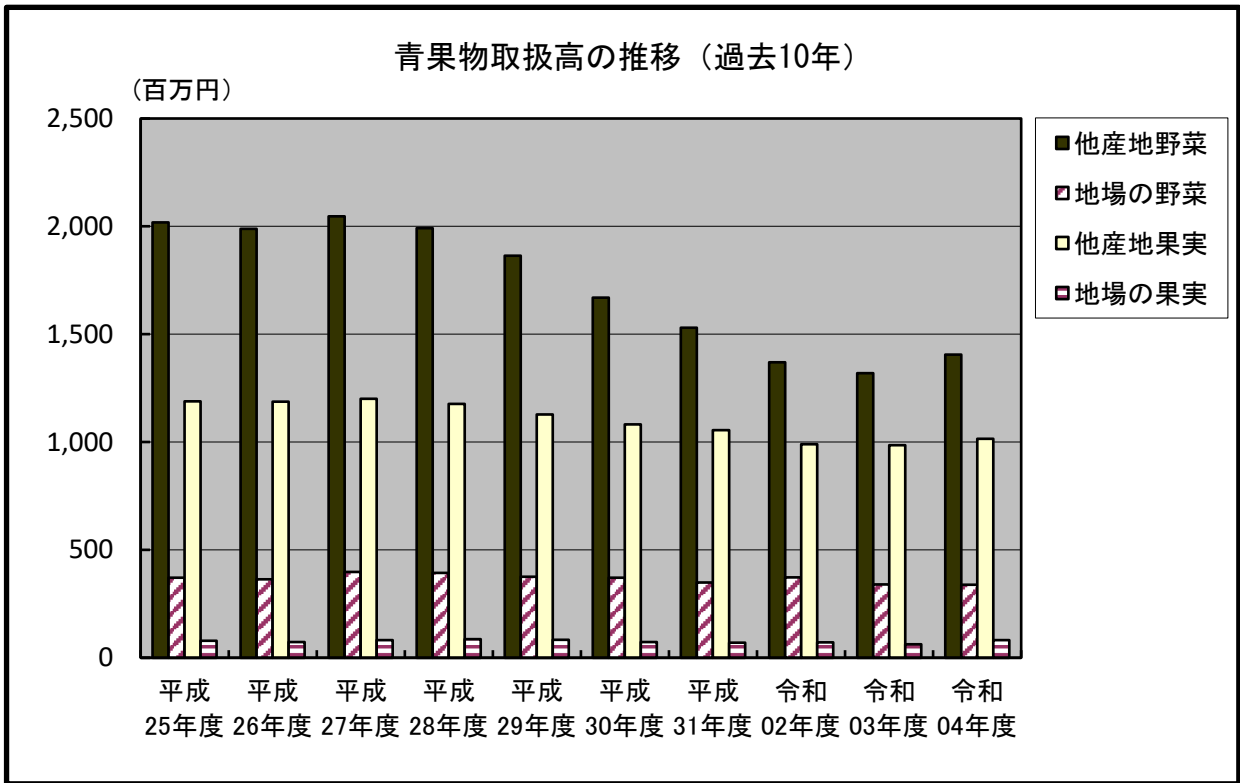
青果物取扱量の推移（過去10年）



地場とは 高山市・飛騨市・下呂市・白川村産

水産物取扱数量の推移（過去10年間）





高山市公設地方卸売市場年報 (令和4年度版)

高山市公設地方卸売市場

〒506-0002 岐阜県高山市問屋町6番地

電 話 0577-34-1818

F A X 0577-34-8979

HP外部 [http://www.city.takayama.lg.jp/
shisei/1000067/1002615/1002637.html](http://www.city.takayama.lg.jp/shisei/1000067/1002615/1002637.html)